

Big Water Fire Apparatus LLC

Annual Fire Pump Maintenance & Certification

The Mechanic that still makes house calls.

Cell 715-292-0499 Home 715-682-6100

<http://www.bigwaterfireapparatus.com>

Ashland, Wisconsin

Est. 2000

September 1, 2022

Apparatus: 6/01 Ford F-350 XL Super Duty
Fire Pump: Portable Davey Pump
Mileage: 24,281.0
Hours: No Hour Meter
VIN: 1FDWF37591ED62667



Maintenance and Inspection completed:

- * Tires: No Manufacture Date Noted Original to the Apparatus? 21 years old
- * Tire Pressures: Streetside Front 40 psi Streetside Rear Inside Dual 19 psi Outside Dual 21 psi
Curbside Front 75 psi Curbside Rear Inside Dual 17 psi Outside Dual 40 psi
All Tires have been adjusted to manufactures specs 75 psi.
- * Front Tires - **showing signs of severe cupping, may possibly be a bad belt Recommend Replacement**
- * Windshield Washer Fluid low- **Fluid topped off**
- * Anti-Freeze Fluid- **Full**
- * Engine Oil- **1 Quart Low. Changed Oil and Filter proper level now.**
- * Chassis was visually inspected **All appeared in good working Order expect for the Rear Springs and Muffler**
- * Front Suspension was inspected **Appears to be in good condition. Geased**
- * Exhaust System was visually inspected- **Muffler is Rusting out**
- * Front Brakes- **50% remanding**
- * Rear Brakes- **50% remanding**
- * Battery System Manufacture Date 3/21 Rated 800 CCA Tested #1 800 CCA
- * Fuel System Injector Cleaner- **Added**
- * Oil Leak from Oil Filter- **Bottom of Oil Filter had a rust pin hole noted in the Filter.**



- * Rear Springs- *showing sign of being bent and weak. Touching Overload Brackets Replacement needed.*
- * Numerous Warning Lights nonoperative



- * Muffler has Rust Holes- *Needs replacement*



- * Numerous Warning Lights Nonoperative - *Troubleshooting took place to determine the cause of no Rear Warning Lights. It was determined they were never connected to a Power Supply and Flasher.*



Portable Davey Pump Inspection:



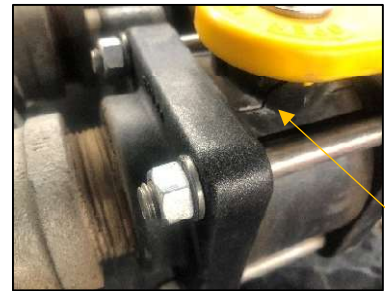
- * This Portable Pump has been Frozen at some point. *Pressure Gauge broke at 35 Psi. and 2 Ball Valves Frozen.*



- * Pressure Gauge was replaced and a Drain was added to help remove water from the Plumbing.



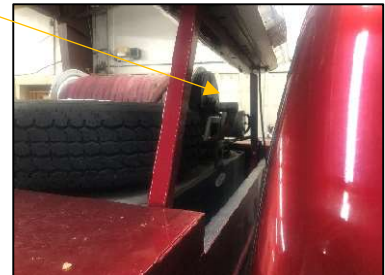
- * Two Ball Valves needed to be replaced because they were Frozen. Water was leaking excessively when Pump was Operating.



- * Spare Tire could be secured better or relocated.



- * Light Bar Bracket should be turned into a Headache Rack to protect the Rear Window and occupants from flying debris during a front-end collision or a hard Brake Check. Steel Mesh and Protective Bars should be added.



- * Hose Nozzle and Hose Reel Control Switch needs to be secured.

-Hose Reel Hose nozzle is laying on the cabinet unsured. The problem here is if the Pump is fired up and the nozzle is slightly open it will spray water in someone's face at High Pressure. Operational Tested Portable Pump no leaks noted after repairs.



* In Cab Wiring could use some cleaning up. I was told a long time ago if the wiring looks like shit it is going to function the same way.



* Two-way Radio Speaker and Garmin needs to be secured. Placed on Dash not fastened. ***Preferably not on the Dash***



* Front Bumper Rust Out on both sides with loose parts.



* Body Damage- ***Door Latch Assembly needs to be replaced bent out of shape. Most likely when the Apparatus hit the Door Frame of the build when responding or returning from a Service Call.***



* Recommendation for Skid Unit: If this Apparatus is going to be used for Winter usage. The Skid Unit should be removed from the Apparatus. The Water Tank should be Drained anyways, so, a Water Supply is not readily available. There are areas in the plumbing, that, holds water, which, cannot be Drained or Blown out with compressed air. I see an on-going problem with Frozen Plumbing and Accessories.

Future Repairs:

- * Tire Replacement
- * Rear Spring Replacement
- * Muffler Replacement
- * Secure Spare Tire or Relocate
- * Repair nonoperative Warning Lights
- * Wiring Repairs needed in Crew Cab
- * Fabricate an oversize table to support the Skid Unit for Winter Storage.

End of this Report.